



Demarec
Demolition and Recycling Equipment BV
Den Hoek 10
5845 EL St. Anthonis (NL)
Tel +31(0) 485 442300
fax +31(0) 485 442120
info@demarec.com
www.demarec.com

**Trendsetter in the demolition
and recycling market**



Dealer

**Demarec
Product Range**

Trendsetter in Demolition and Recycling Equipment

demarec.com

Demarec DemaDrive Demolition and sorting grabs

Demarec DemaDrive demolition and sorting grabs are extremely suitable for use in demolition, recycling and under water activities.



A fully closed system, with the shells mounted directly on four axle stubs that provide the opening and closing of the shells. The system has **no cylinder and parallel bars** (and consequently no greasing points) and is therefore **completely maintenance-free**.



Main Features:

- Compact design
- Maintenance Free
- Perforated shells
- Long Service Life
- Constant closing force
- Optimal hydraulic protection
- Grab closed safety valve
- Bolt on wear blades
- Optimal weight



DRG-9-DD



Type	DRG-3-DD	DRG-5-DD	DRG-6-DD	DRG-9-DD	DRG-15-DD***	DRG-18-DD***
Carrier weight*	3 ton	3-4 ton	4-7 ton	6-9 ton	14-18 ton	16-20 ton
Weight**	245 kg	275 kg	300 kg	360 kg	985 kg	1085 kg
Capacity	60 l	100 l	100 l	150 l	400 l	580 l
Dimensions						
Opening	975 mm	1135 mm	1135 mm	1400 mm	1750 mm	1900 mm
Width	400 mm	500 mm	500 mm	600 mm	800 mm	1000 mm
Height	400 mm	500 mm	600 mm	560 mm	1023 mm	1061 mm
Hydraulic						
Opening/Closing Pmax	320 bar	320 bar	320 bar	320 bar	350 bar	350 bar
Flow	40-75 l/min	40-75 l/min	40-75 l/min	40-75 l/min	50-150 l/min	50-150 l/min
Rotator	6 ton	6 ton	10 ton	15 ton	-	-
Rotation Pmax	260 bar	260 bar	260 bar	260 bar	170 bar	170 bar
Flow	10-20 l/min	10-20 l/min	10-20 l/min	10-20 l/min	40-60 l/min	40-60 l/min

*Depending on capacity of carrier. **Weight excluding bracket. ***Available in the near future.

Subject to change without notice.

Demarec Demolition and sorting grabs

Demarec demolition and sorting grabs are widely applied for demolition, recycling and other applications. These grabs have already proved themselves in the demolition and recycling industries.



The Delta-Box frame is built to withstand the forces of heavy applications and therefore has a long lifetime.



Main Features:

- Delta-Box Frame with robust end stops
- Heavy duty rotation motor(s) with shock protection
- Double roller ring (from DRG-28)
- Heavy duty side plates from H500
- Pivots sealed grease in debris out
- Wear blades made from HB500 steel can be turned 3 times (from DRG-17)
- Load safety valve
- Hydraulic cylinder end damping
- Bolt on mounting bracket
- Filters in rotation circuit



Type DRG-14 DRG-15 DRG-17 DRG-19 DRG-22 DRG-28 DRG-36 DRG-45 DRG-65

Carrier weight*	10-15 ton	12-16 ton	12-19 ton	13-20 ton	15-24 ton	20-32 ton	25-40 ton	35-50 ton	50-70 ton
Weight**	855 kg	895 kg	1025 kg	1115kg	1315 kg	1790 kg	2010kg	2390 kg	3865 kg
Capacity	340 l	415 l	365 l	480 l	570 l	825 l	960 l	1075 l	1660 l
Closing force	43 kN	43 kN	50 kN	48 kN	56 kN	70 kN	80 kN	80 kN	140 kN

Dimensions

Opening	A	1730 mm	1730 mm	1864 mm	1967 mm	2193 mm	2325 mm	2325 mm	2700 mm
Width	B	750 mm	900 mm	1000 mm	1000 mm	1100 mm	1250 mm	1400 mm	1500 mm
Height	C	1217 mm	1217 mm	1225 mm	1256 mm	1409 mm	1481 mm	1496 mm	1930 mm

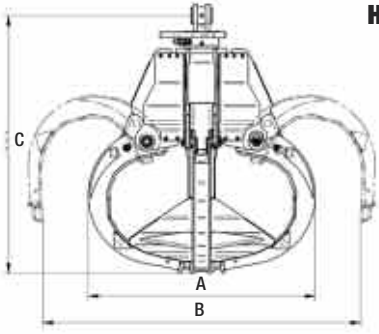
Hydraulic

Opening/Closing Pmax	350 bar	350 bar	350 bar	350 bar	350 bar	350 bar	350 bar	350 bar	350 bar
Flow	80 l/min	80 l/min	100 l/min	100 l/min	100 l/min	120 l/min	120 l/min	120 l/min	200 l/min
Rotation Pmax	170 bar	170 bar	170 bar	170 bar	170 bar	170 bar	170 bar	170 bar	170 bar
Flow	40 l/min	40 l/min	40 l/min	40 l/min	40 l/min	40/60 l/min	40-60 l/min	40-60 l/min	40-60 l/min

*Depending on capacity of carrier. **Weight excluding bracket.

Subject to change without notice.

Demarec Polyp Grabs



Type	DPG 20V 450-5-F	DPG 20V 450-5-H	DPG 20V 450-5-W	DPG 20V 450-5-T	DPG 25V 550-5-F	DPG 25V 550-5-H	DPG 25V 550-5-W	DPG 25V 550-5-T
Carrier weight*	16-20 ton	16-20 ton	16-20 ton	16-20 ton	20-25 ton	20-25 ton	20-25 ton	20-25 ton
Opening/Closing Pmax	350 bar	350 bar	350 bar	350 bar	350 bar	350 bar	350 bar	350 bar
Flow (l/m)	50-150	50-150	50-150	50-150	90-150	90-150	90-150	90-150
Rotation Pmax	320 bar	320 bar	320 bar	320 bar	320 bar	320 bar	320 bar	320 bar
Flow (l/m)	25-75	25-75	25-75	25-75	25-75	25-75	25-75	25-75

Dimension A	1370 mm	1370 mm	1370 mm	1460 mm	1460 mm	1460 mm	1460 mm	1460 mm
Dimension B	1910 mm	1910 mm	1910 mm	2180 mm	2180 mm	2180 mm	2180 mm	2180 mm
Dimension C	1550 mm	1550 mm	1550 mm	1680 mm	1680 mm	1680 mm	1680 mm	1680 mm
Capacity	450 l	450 l	450 l	550 l	550 l	550 l	550 l	550 l
Weight**	1145 kg	1035 kg	970 kg	930 kg	1460 kg	1300 kg	1300 kg	1300 kg
Load capacity	7000 kg	7000 kg	7000 kg	7000 kg	7000 kg	7000 kg	7000 kg	7000 kg

DPG20/25/36/51 also available in 4-times option.
DPG 36 also available in 6-times option.

Type	DPG 25V 550-5-T	DPG 36V 600-5-H	DPG 36V 600-5-W	DPG 36V 600-5-T	DPG 36V 800-5-F	DPG 36V 800-5-H	DPG 36V 800-5-W	DPG 36V 800-5-T	DPG 51V 1000-5-H	DPG 51V 1000-5-W	DPG 51V 1000-5-T
Carrier weight*	20-25 ton	25-35 ton	25-35 ton	25-35 ton	25-35 ton	25-35 ton	25-35 ton	25-35 ton	35-50 ton	35-50 ton	35-50 ton
Opening/Closing Pmax	350 bar	350 bar	350 bar	350 bar	350 bar	350 bar	350 bar	350 bar	350 bar	350 bar	350 bar
Flow (l/m)	90-150	90-200	90-200	90-200	90-200	90-200	90-200	90-200	90-200	90-200	90-200
Rotation Pmax	320 bar	320 bar	320 bar	320 bar	320 bar	320 bar	320 bar	320 bar	320 bar	320 bar	320 bar
Flow (l/m)	25-75	25-100	25-100	25-100	25-100	25-100	25-100	25-100	25-100	25-100	25-100
Dimension A	1460 mm	1440 mm	1440 mm	1440 mm	1585 mm	1585 mm	1585 mm	1585 mm	1640 mm	1640 mm	1640 mm
Dimension B	2180 mm	2220 mm	2220 mm	2220 mm	2200 mm	2200 mm	2200 mm	2200 mm	2445 mm	2445 mm	2445 mm
Dimension C	1680 mm	2075 mm	2075 mm	2075 mm	2075 mm	2075 mm	2075 mm	2075 mm	2205 mm	2205 mm	2205 mm
Capacity	550 l	600 l	600 l	600 l	800 l	800 l	800 l	800 l	1000 l	1000 l	1000 l
Weight**	1200 kg	1665 kg	1595 kg	1560 kg	1935 kg	1720 kg	1635 kg	1600 kg	1985kg	1700 kg	1670 kg
Load capacity	7000 kg	10000 kg	10000 kg	10000 kg	10000 kg	10000 kg	10000 kg	10000 kg	10000 kg	10000 kg	10000 kg

*Depending on capacity of carrier.
**Weight excluding suspension.
Subject to change without notice.

F = Fully closing tines
H = Half closing tines
T = Pointed tines
W = Wide style of pointed tines



Demarec Multi-Quick Processors

Demarec MQP's are available with various jaws. This enables them to be employed for cutting and crushing concrete constructions with reinforcement steel and for cutting steel constructions and scrap.



Unique system from Demarec that enables a fast and convenient hydraulic exchange of jaws by a single person... From scrap cutter to concrete crusher... from concrete crusher... to concrete cutter... and more.

The great advantage:

- no unnecessary excavator idle time
- always the right jaw



Combi-Jaw (C)



Demolition-Jaw (D)



Pulveriser-Jaw (P)



Shear-Jaw (S)



Tankshear-Jaw (T)



Universal-Jaw (U)*

Hydraulic changing within

10
minutes



Cylinder technique developed by Demarec that provides enormous extra performance. Instead of the usual two, the DemaPower-System uses **four** pressure chambers. This enables the express valve to work in two directions: cylinder in and cylinder out.

The result:

- 20% more power
- extremely fast cycle times



Main Features:

- Demalink-system, hydraulically changing the jaws within **10** minutes
- Very powerful because of the DemaPower-System
- Exchangeable wear parts
- Exchangeable blades
- Jaw guided stabilization in front of and behind the pivot point (C- and S-Jaw)
- 2 Rotation motors for extra rotation power
- Rotary joint with extra channel
- Filters in rotation circuit
- Excellent power to weight ratio & large jaw openings
- Possible to change wear parts on site

Optional: Dust spraying system

* Universal-Jaw will be available shortly

Type	MQP-25-Y	MQP-30-Y	MQP-45-Y	MQP-60-Y
Carrier weight (ca.)	18-25 ton	20-35 ton	32-50 ton	45-65 ton
Opening/Closing Pmax	350 bar	350 bar	350 bar	350 bar
Flow	120-200 l/min	150-250 l/min	200-300 l/min	300-400 l/min
Rotation Pmax	170 bar	170 bar	170 bar	170 bar
Flow	40-60 l/min	40-60 l/min	40-60 l/min	40-60 l/min
Cycle time opening/closing	1,5 / 2,3 sec	2,0 / 2,3 sec	2,0 / 2,9 sec	2,0 / 2,8 sec

Combi-Jaw

Demolition-Jaw

Type	MQP-25-C	MQP-30-C	MQP-45-C	MQP-60-C	MQP-25-D**	MQP-30-D	MQP-45-D	MQP-60-D
Weight* (ca.)	1960 kg	2600 kg	3200 kg	4600 kg	1950 kg	2450 kg	3150 kg	4375 kg
Closing force front tooth	75 ton	90 ton	120 ton	140 ton	80 ton	95 ton	125 ton	145 ton
Jaw opening	785 mm	875 mm	990 mm	1150 mm	785 mm	870 mm	990 mm	1175 mm
Width of upper jaw	90 mm	100 mm	100 mm	100 mm	90 mm	100 mm	100 mm	100 mm
Width of lower jaw	375 mm	440 mm	450 mm	480 mm	470 mm	470 mm	515 mm	550 mm
Depth	810 mm	920 mm	975 mm	1050 mm	810 mm	900 mm	960 mm	1090 mm

Pulveriser-Jaw

Shear

Type	MQP-25-P	MQP-30-P	MQP-45-P	MQP-60-P	MQP-25-S	MQP-30-S	MQP-45-S	MQP-60-S
Weight* (ca.)	1990 kg	2500 kg	3250 kg	4650 kg	1900 kg	2375 kg	3015 kg	4400 kg
Closing force front tooth	75 ton	90 ton	120 ton	140 ton	275 ton***	310 ton***	390 ton***	440 ton***
Jaw opening	790 mm	880 mm	980 mm	1150 mm	370 mm	410 mm	465 mm	540 mm
Width of upper jaw	200 mm	350 mm	400 mm	450 mm	100 mm	120 mm	120 mm	120 mm
Width of lower jaw	400 mm	470 mm	515 mm	560 mm	320 mm	355 mm	375 mm	410 mm
Depth	810 mm	830 mm	945 mm	1050 mm	560 mm	600 mm	700 mm	750 mm

Tankshear-Jaw

Universal-Jaw

Type	MQP-25-T**	MQP-30-T	MQP-45-T	MQP-60-T	MQP-25-U	MQP-30-U	MQP-45-U	MQP-60-U
Weight* (ca.)	-	2560 kg	3160 kg	4325 kg	-	-	3090 kg	-
Closing force front tooth	-	330 ton***	425 ton***	605 ton***	-	-	135 ton	-
Jaw opening	-	335 mm	390 mm	400 mm	-	-	690 mm	-
Width of upper jaw	-	120 mm	120 mm	150 mm	-	-	310 mm	-
Width of lower jaw	-	305 mm	305 mm	355 mm	-	-	525 mm	-
Depth	-	575 mm	630 mm	660 mm	-	-	830 mm	-

*Weight excluding bracket **Available in the near future *** Mid up blade

Subject to change without notice.

Demarec Static Pulverisers

Demarec Static Pulverisers have been developed for secondary demolition – breaking up the concrete and freeing reinforcing from it. Pulverising at the demolition site reduces the costs of transport and recycling.

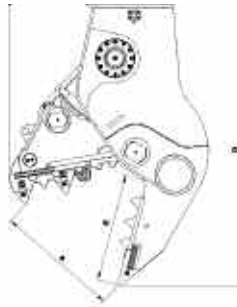
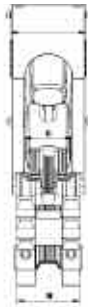


A unique cylinder technique, 20% more power and extremely fast cycle times.



Main Features:

- Excellent speed & power to weight ratio
- Exchangeable ground tooth plate
- Exchangeable teeth
- Exchangeable scraping teeth on the fixed jaw
- Exchangeable shrouds (can be turned)
- Overdimensioned pivot point with dust seal
- Robust pivot points of the cylinder
- Speed valve in both directions; cylinder in and cylinder out
- Exchanging of wearparts on site
- Highest optimal speed and power from the DemaPower-System



Type

DSP-60

DSP-45

DSP-30

Carrier weight*	42-65 ton	30-50 ton	20-35 ton
Weight**	3600 kg	2600 kg	2100 kg
Closing force on front tooth (ca.)	140 ton	120 ton	90 ton
Dimensions			
Jaw opening	1185 mm	1015 mm	885 mm
Width of upper jaw	450 mm	400 mm	350 mm
Width of lower jaw	565 mm	525 mm	490 mm
Depth	1025 mm	900 mm	840 mm
Height	2250 mm	1950 mm	1800 mm
Length of cutting blades***	250 mm	200 mm	200 mm
Hydraulic			
Opening/Closing Pmax	350 bar	350 bar	350 bar
Flow	300-400 l/min	200-300 l/min	150-250 l/min
Cycle time Opening/Closing	2,0 / 2,8 sec	2,0 / 2,9 sec	2,0 / 2,3 sec

*Depending on capacity of carrier. **Weight excluding bracket. ***Optional.

Subject to change without notice.

Demarec Rotating Pulverisers

Demarec Rotating Pulverisers are developed for both primary and secondary demolition. The slewing ring allows the pulveriser to revolve fully 360° to the left or right. The rotating pulveriser can therefore be optimally positioned during demolition. One and the same piece of equipment can be used for demolition and recycling.



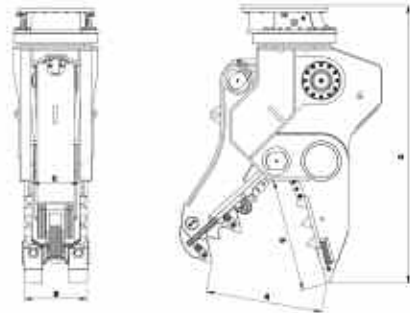
A unique cylinder technique, 20% more power and extremely fast cycle times.



Main Features:

- Excellent speed & power to weight ratio
- Exchangeable ground tooth plate
- Exchangeable teeth, shrouds and cutting blades
- Twin rotation motors for extra rotation power
- Filters in rotation circuit
- Rotary joint with extra channel
- Speed valve in both directions; cylinder in and cylinder out
- Robust pivot points of the cylinder
- Exchanging of wearparts on site
- Highest optimal speed and power form the DemaPower-System

Optional: Dust spraying system



Type

DRP-60

45-65 ton
4200 kg
140 ton

DRP-45

32-50 ton
2975 kg
120 ton

DRP-30

22-35 ton
2430 kg
90 ton

Dimensions

Jaw opening
Width of upper jaw
Width of lower jaw
Depth
Height
Length of cutting blades

A
B
C
D
E

880 mm
350 mm
490 mm
885 mm
2100mm
200 mm

985 mm
400 mm
525 mm
945 mm
2270 mm
200 mm

1150 mm
450 mm
565 mm
1070 mm
2550 mm
250 mm

Hydraulic

Opening/Closing Pmax
Flow
Rotation Pmax
Flow
Cycle time Opening/Closing

350 bar
150-250 l/min
170 bar
40-60 l/min
2,0 / 2,3 sec

350 bar
200-300 l/min
170 bar
40-60 l/min
2,0 / 2,9 sec

350 bar
300-400 l/min
170 bar
40-60 l/min
2,0 / 2,8 sec

*Depending on capacity of carrier. **Weight excluding bracket.

Subject to change without notice.

Demarec Shears

The Demarec Dedicated Shear (DS-and XS-series) handle even the toughest of tasks. This extremely robust tool can be used for a wide variety of jobs including steel structure demolition and ship dismantling, scrap and rail yards, conditioning of industrial mixed scrap. DS Shears*** are equipped with 180° rotation and can be used on excavators form 8t-80t operating weight. XS Shears are equipped with 360° rotation and can be used on excavators form 10t-110t operating weight. Both depending on mounting style - boom or stick. The mobile Demarec Rail Cutter RC-26-R is a special development for the controlled demolition of rail systems and for the scrap preparation of railway lines.

*** DS-5000-R and DS-8000-R also available as reinforced RXT-version with higher cutting forces



XS-4000-R



DS-5000-R



RC-26-R

Main Features:

- Inverted hydraulic cylinder for optimal rod protection
- Large heavy duty bearings
- Main cutting blades are reversible
- 360° endless rotation (XS-series)
- 180° rotation (DS/RC-series)

Hydraulic XS-serie

Opening/Closing Pmax	350 bar
Flow	80-160 to 600-800 l/min
Rotation Pmax	200 bar
Flow	40 l/min

Hydraulic DS/RC-serie

Opening/Closing Pmax	350 bar
Flow	80-160 to 600-800 l/min
Rotation Pmax	180 bar
Flow	40 l/min

Type

RC-26-R

European version

Carrier weight (stick)*	16-28 t
Weight **	2800 kg

Dimensions

Length	2550 mm
Jaw opening	205 mm
Depth	205 mm

Special version for US market Mobile Rail Cutter RC-26-RA

Type	XS-700	XS-2000	XS-3000	XS-4000	XS-4800	XS-7000	XS-9000	DS-700-R	DS-2000-R	DS-3000-R	DS-4000-R	DS-5000-R	DS-8000-R	DS-10000-R
Carrier weight (boom)*	10-14 t	14-18 t	20-24 t	24-30 t	30-36 t	42-60 t	60-90 t	8 t	12 t	18 t	22 t	34 t	42 t	70 t
Carrier weight (stick)*	14-18 t	20-24 t	26-30 t	32-40 t	36-45 t	60-80 t	80-100 t	14 t	20 t	26 t	30 t	50 t	80 t	- t
Weight **	1250 kg	1900 kg	2850 kg	3950 kg	4900 kg	7600 kg	9400 kg	1260 kg	1800 kg	2950 kg	4100 kg	6500 kg	8500 kg	12300 kg
Closing force (throat/blade center)	145/82 t	289/145 t	320/165 t	495/235 t	615/281 t	886/382 t	989/465 t	145/82 t	289/145 t	319/165 t	460/230 t	771/332 t	848/394 t	1046/480 t
Dimensions														
Length	2690 mm	3205 mm	3335 mm	3725 mm	4340 mm	4960 mm	5495 mm	2690 mm	3205 mm	3335 mm	3725 mm	4340 mm	4960 mm	5495 mm
Jaw opening	350 mm	535 mm	635 mm	685 mm	780 mm	895 mm	945 mm	350 mm	535 mm	635 mm	685 mm	780 mm	895 mm	945 mm
Primary cutter length	200 mm	250 mm	300 mm	350 mm	400 mm	450 mm	480 mm	200 mm	250 mm	300 mm	350 mm	400 mm	450 mm	480 mm
Type	DS-700-R	DS-2000-R	DS-3000-R	DS-4000-R	DS-5000-R	DS-8000-R	DS-10000-R	DS-700-R	DS-2000-R	DS-3000-R	DS-4000-R	DS-5000-R	DS-8000-R	DS-10000-R
Carrier weight (boom)*	8 t	12 t	18 t	22 t	34 t	42 t	70 t	8 t	12 t	18 t	22 t	34 t	42 t	70 t
Carrier weight (stick)*	14 t	20 t	26 t	30 t	50 t	80 t	- t	14 t	20 t	26 t	30 t	50 t	80 t	- t
Weight **	1260 kg	1800 kg	2950 kg	4100 kg	6500 kg	8500 kg	12300 kg	1260 kg	1800 kg	2950 kg	4100 kg	6500 kg	8500 kg	12300 kg
Closing force (throat/blade center)	145/82 t	289/145 t	319/165 t	460/230 t	771/332 t	848/394 t	1046/480 t	145/82 t	289/145 t	319/165 t	460/230 t	771/332 t	848/394 t	1046/480 t
Dimensions														
Length	2360 mm	2840 mm	3385 mm	3450 mm	4520 mm	4920 mm	5865 mm	2360 mm	2840 mm	3385 mm	3450 mm	4520 mm	4920 mm	5865 mm
Jaw opening	340 mm	350 mm	550 mm	550 mm	715 mm	830 mm	1110 mm	340 mm	350 mm	550 mm	550 mm	715 mm	830 mm	1110 mm
Primary cutter length	200 mm	250 mm	300 mm	300 mm	450 mm	450 mm	550 mm	200 mm	250 mm	300 mm	300 mm	450 mm	450 mm	550 mm

*Depending on capacity of carrier. **Weight excluding bracket.

Subject to change without notice.

Demarec Hammers

For excavators from 1,5 ton to 100 ton operating weight, Demarec DBC Series Closed Breakers have been developed in some of the toughest environments. The breaker includes a maintenance free energy chamber. Blank firing protection is guaranteed as well as shock absorbance at all sides of the extremely robust housing. The quiet operation is achieved due to the use of synthetic wear plates. All Demarec breakers come with two chisel tips of your own choice. They are mounted extremely easily and fast – ready for every operation! The tool is prepared to house an automatic greasing system, that is available as an option. Another option is the underwater or the tunnel-set-up.



Main features:

- Maintenance free energy chamber
- Blank firing protection
- Extremely robust housing with shock absorbance at all sides
- Quiet operation due to the use of synthetic wear plates
- From DBC 65 optional: including automatic greasing system

Optional:
underwater set-up, tunnel set-up
(from DBC-120 till DBC-170)



Type	DBC-10	DBC-20	DBC-30	DBC-40	DBC-45	DBC-65	DBC-85	DBC-120
Carrier weight*	1.5-3 ton	2-6 ton	3-7 ton	4-10 ton	4-10 ton	7-13 ton	9-15 ton	14-20 ton
Weight**	110 kg	250 kg	310 kg	460 kg	550 kg	650 kg	950 kg	1200 kg
Work height	1030 mm	1270 mm	1430 mm	1590 mm	1535 mm	1838 mm	1911 mm	2256 mm
Chisel ø	48 mm	68 mm	70 mm	80 mm	85 mm	95 mm	100 mm	110 mm
Impact energy (joule)	190	450	840	980	1060	1450	1760	1880
Impact frequency (bpm)	1000-1500	450-100	390-1000	450-1000	500-900	350-700	390-700	400-700
Hydraulic								
Operating pressure	90 bar	100 bar	105-155 bar	100-140 bar	135 bar	135 bar	135 bar	135 bar
Backpressure	10 bar	10 bar	10 bar	5 bar	5-10 bar	5-10 bar	5-10 bar	5-10 bar
Flow min/max (l/min)	5-35	30-60	45-70	55-100	50-100	60-120	70-130	70-130

Type	DBC-150	DBC-170	DBC-210	DBC-250	DBC-275	DBC-360	DBC-500	DBC-700
Carrier weight*	18-26 ton	22-29 ton	25-32 ton	29-40 ton	33-50 ton	40-70 ton	45-70 ton	60-100 ton
Weight**	1600 kg	1870 kg	2200 kg	2520 kg	2950 kg	3750 kg	4750 kg	6950 kg
Work height	2473 mm	2500 mm	2500 mm	2912 mm	3050 mm	3215 mm	3430 mm	3866 mm
Chisel ø	120 mm	130 mm	140 mm	150 mm	160 mm	170 mm	190 mm	210 mm
Impact energy (joule)	2880	3300	4500	5610	6000	8000	9800	13000
Impact frequency (bpm)	360-650	350-550	350-550	330-525	320-520	320-510	300-420	285-400
Hydraulic								
Operating pressure	135 bar	135 bar	140 bar	140 bar	140 bar	140 bar	140 bar	150 bar
Backpressure	5-10 bar	5-10 bar	10 bar	10 bar	10 bar	10 bar	10 bar	10 bar
Flow min/max (l/min)	100-180	120-180	160-320	180-250	170-300	200-300	250-340	300-400

*Depending on capacity of carrier. **Weight excluding bracket.

Subject to change without notice.